

Anti-ALCAM(CD166) hIgG1 Antibody(CX-2009)

Product information

GM-87693AB-10	10 µg
GM-87693AB-100	100 µg
GM-87693AB-1000	1 mg

Antibody Information

Species Reactivity	Human; Cynomolgus
Clone	ALCAM(CD166)
Source/Isotype	Monoclonal human IgG1, κ
Application	Flow cytometry; Bioactivity-ELISA
Specificity	Detects ALCAM(CD166)
Gene	ALCAM(CD166)
Other Names	MEMD
Gene ID	Q13740 (human); G7NZQ8 (Cynomolgus)
Background	This gene encodes activated leukocyte cell adhesion molecule (ALCAM), also known as CD166 (cluster of differentiation 166), which is a member of a subfamily of immunoglobulin receptors with five immunoglobulin-like domains (VVC2C2C2) in the extracellular domain. This protein binds to T-cell differentiation antigene CD6, and is implicated in the processes of cell adhesion and migration. Multiple alternatively spliced transcript variants encoding different isoforms have been found.
Storage	Store at 2-8°C short term (1-2 weeks).Store at ≤ -20°C long term. Avoid repeated freeze-thaw.
Formulation	Phosphate-buffered solution, pH 7.2.
Endotoxin	< 1 EU/mg, determined by LAL gel clotting assay

Data Examples

Flow cytometry

H_ALCAM(CD166) CHO-K1 Cell Line (Catalog # GM-C19057) was stained with Anti-ALCAM(CD166) hlgG1 Antibody(CX-2009) (Catalog # GM-87693AB) or isotype control antibody, followed by anti-Human IgG APC-conjugated Secondary Antibody.

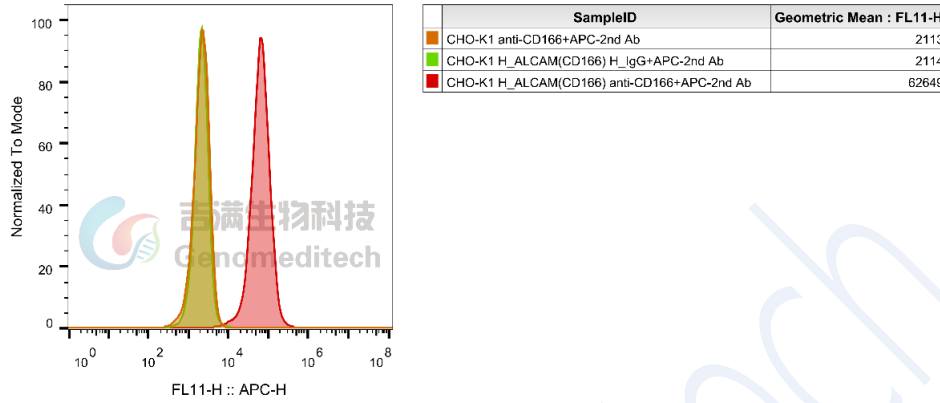


Fig. FACS

Bioactivity-ELISA

Human CD166 Protein; His Tag (Catalog # GM-84571RP) was immobilized at 5 µg/ml (100 µL/well). Increasing concentrations of Anti-H_ALCAM(CD166) hlgG1 Antibody(CX-2009) (Catalog # GM-87693AB) were added.

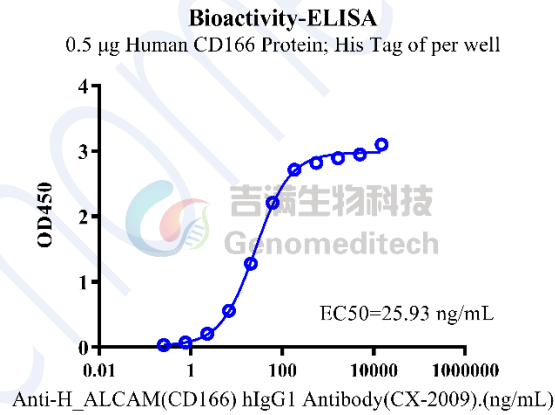


Fig. assay

Bioactivity-ELISA

Biotinylated Human CD166 Protein; His-Avi Tag (Catalog # GM-87263RP) was immobilized at 1 µg/ml (100 µL/well) on streptavidin precoated. Increasing concentrations of Anti-H_ALCAM(CD166) hlgG1 Antibody (CX-2009) (Catalog # GM-87693AB) were added.

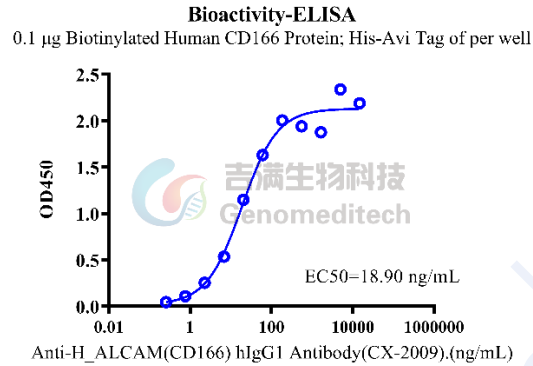


Fig. assay

Bioactivity-ELISA

Cynomolgus CD166 Protein; His Tag (Catalog # GM-85965RP) was immobilized at 5 µg/ml (100 µL/well). Increasing concentrations of Anti-H_ALCAM(CD166) hlgG1 Antibody(CX-2009) (Catalog # GM-87693AB) were added.

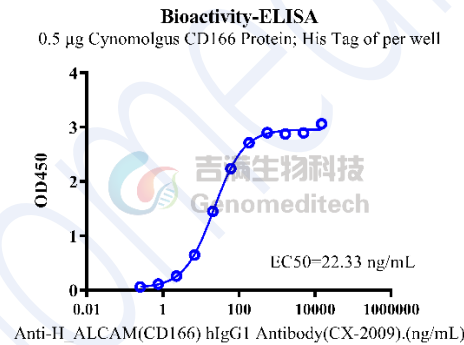


Fig. assay